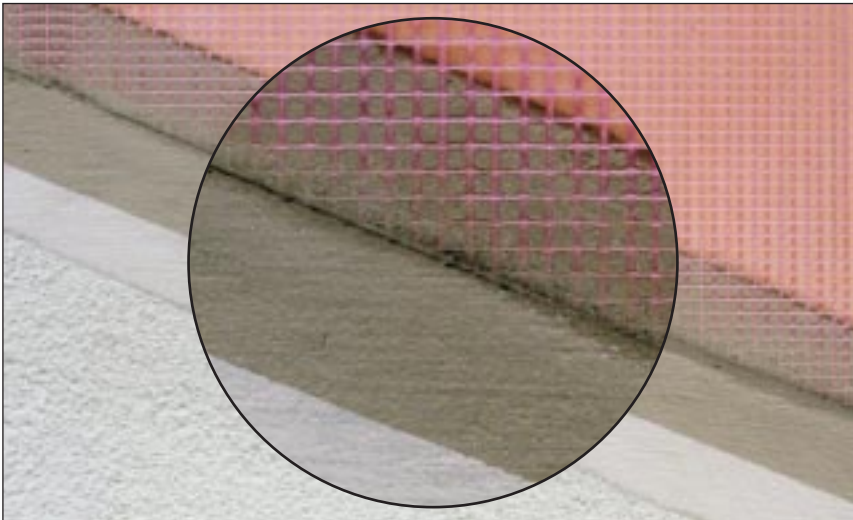


A polymer-modified dry powder cement-based render mortar

# weber.rend LAC

## lightweight adhesive



### Uses

- Bedding coat for meshcloth systems,
- Bonding coat for plastic or mineral fibre lamella insulation systems

When used in strict accordance with manufacturer's instructions and within an appropriate system, **Weber** renders will have a minimum life of 10 years.

### Constraints

The quality of application of this material depends on suitable operative skills and product familiarity.

Restrictions on weather conditions during application and curing must be respected.

Sound trade practices and printed instructions must be followed.

Good access and appropriate protection must be provided.

### Features and benefits

- ▲ Low mass for reduced shear load
- ▲ Polymer modified for high bond strength
- ▲ Factory batched for consistency
- ▲ Practical benefits of smooth application, speed, economy and long shelf-life
- ▲ Technical support from a Quality Assured company
- ▲ Established track record in varying climatic conditions
- ▲ Part of a number of BBA approved External Wall Insulation systems



### About this product

**weber.rend LAC** is a low density, polymer-modified dry powder cement-based mortar.

This product forms part of a number of BBA approved insulation systems.

### Technical data

#### External wall insulation systems – weber.therm XM

Insulation Board	Reinforcement	Fixing	1st Coat	2nd Coat	Finish
MFS	Meshcloth	Mechanical	<b>weber.rend LAC</b>	<b>weber.rend PTC</b> or <b>weber.rend PTS</b> or optional <b>weber.rend PTC</b>	Dry-dash Scrape texture
EPS		<b>weber.rend LAC</b>			
PHS		Mechanical or <b>weber.rend LAC</b>			<b>weber PR310</b> and Synthetic finish

#### Multi-coat render systems - weber.rend MT on panel background

First Layer	Reinforcement	Fixing	1st Coat	2nd Coat	Finish
N/A	Meshcloth	N/A	<b>weber.rend LAC</b>	N/A	<b>weber PR310</b> and <b>weber.plast TF</b> or <b>weber.plast DF</b> or <b>weber.sil TF</b> or <b>weber.plast P</b> or <b>plastene SG</b>

#### Multi-coat render systems - weber.rend MT on masonry background

First Layer (levelling coat)	Reinforcement	Fixing	1st Coat	2nd Coat	Finish
<b>weber.rend POC</b>	Meshcloth	N/A	<b>weber.rend LAC</b>	N/A	<b>weber PR310</b> and <b>weber.plast TF</b> or <b>weber.plast DF</b> or <b>weber.sil TF</b> or <b>weber.plast P</b> or <b>plastene SG</b>

# weber.rend LAC

## Mixing and application

Mix **weber.rend LAC** by adding clean water only to achieve a thick creamy consistency.

### Bonding

The adhesive is applied to the back of the insulation boards in 4 vertical strips 100 mm wide, 25 – 30 mm thick.

### Adhesive coat

Coat the insulation boards with the adhesive to a thickness of about 2 – 3 mm and lay in the meshcloth. Once the initial coat has started to 'take-up', apply a second layer of adhesive mortar to produce a sandwich approximately 6 mm thick totally encapsulating the meshcloth.

**Mineral finish:** lightly comb scratch to achieve a good mechanical key.

**Synthetic finish:** sponge finish to achieve a flat surface

Spillages stain and are difficult to remove so:

- protect vulnerable areas thoroughly
- mix mortar in plastic containers using a paddle mixer to facilitate cleaning
- don't mix too much material at one time
- wear protective clothing.

### Good practice

Do not apply:

- If frost is forecast within 24 hours of use
- In damp/wet conditions
- In temperatures below 5°C or above 30°C
- On elevations in direct sunlight or where the substrate is hot

## Packaging

**weber.rend LAC** is packaged 3-ply 20 kg bags with batch code and description on the side.

## Coverage

Use	Nominal thickness	Coverage
<i>Fixing insulant</i>	N/A	3 kg/m <sup>2</sup>
<i>Meshcloth coat</i>	6mm	6.5 kg/m <sup>2</sup>

## Storage and shelf life

When stored unopened in a dry place at temperatures above 5°C, shelf life is 12 months from date of manufacture.

## Health and safety

Contains cement (Contains chromium (VI). May produce an allergic reaction). Harmful by inhalation. Irritating to eyes and skin. Keep out of the reach of children. In case of contact with eyes, rinse immediately with plenty of water and seek medical help. After contact with skin, wash immediately with plenty of soap and water. Wear suitable protective clothing, gloves and eye/face protection.

**For further information, please request the Material Safety Data Sheet for this product.**

### Technical services

Weber's Customer Services Department has a team of experienced advisors available to provide on-site advice both at the specification stage and during application. Detailed specifications can be provided for specific projects or more general works. Site visits and on-site demonstrations can be arranged on request.

#### Technical helpline

Tel: (01525) 722110  
Fax: (01525) 718988

### Sales enquiries

#### Sales, England and Wales

Tel: (01782) 813028  
Fax: (01782) 839028

#### Sales, Scotland

Tel: (0141) 445 0121  
Fax: (0141) 445 0122

#### Sales, Ireland

Tel: (028) 9335 2999  
Fax: (028) 9332 3232

#### Saint-Gobain Weber Ltd

Dickens House, Enterprise Way, Maulden Road, Flitwick, Bedford MK45 5BY, UK  
Tel: 08703 330070 Fax: (01525) 718988 e-mail: mail@weberbuildingsolutions.co.uk

To the best of our knowledge and belief, this information is true and accurate, but as conditions of use and any labour involved are beyond our control, the end user must satisfy himself by prior testing that the product is suitable for his specific application, and no responsibility can be accepted, or any warranty given by our Representatives, Agents or Distributors. Products are sold subject to our Standard Conditions of Sale and the end user should ensure that he has consulted our latest literature.