

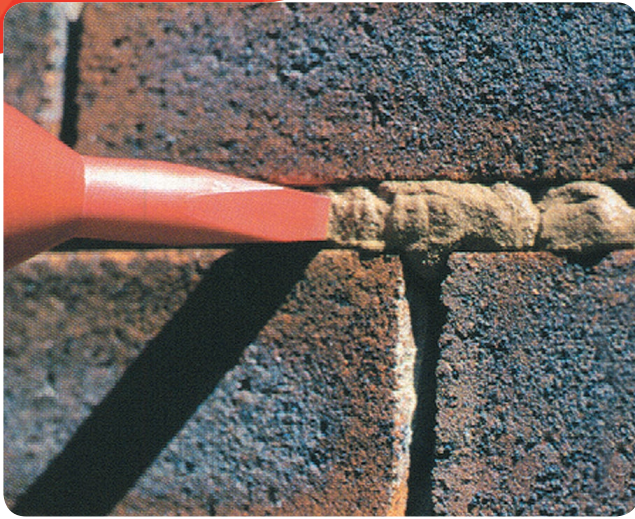
# STANDARD MORTAR (WALLING)

TECHNICAL DATA

**PAREX**

A SIKA COMPANY

Issue 5



## BENEFITS

- ✓ **Fast Application**
- ✓ **Cost Effective**
- ✓ **High Strength**
- ✓ **Complete Joint Fill**
- ✓ **Stain-free & Colour Consistent**

### Description

Designed for gun-injection, Parex Standard Mortar provides a clean, quick, lasting solution for pointing sound brickwork or masonry.

Consistent in both colour and finish, Parex Standard Mortars are pumped deep into the joint, providing a complete fill to create high strength joints. The finished joints are highly resistant to weather and freeze-thaw action.

Parex Standard Mortar can be injected into joints as narrow as 5mm and will penetrate to a depth in excess of 100mm, allowing for the deepest of joints.

A standard range of ten colours is readily available, along with a choice of more than 100 formulations, which can be produced to order. Bespoke blends, where exact matching is required, are also available.

### Standard Colour Range

Natural, White, Yorkstone, Sandstone, Light Brown, Dark Brown, Light Grey, Dark Grey, Black and Brick Red.

### Product Details/Classification

Parex Standard Mortar is a dry packed blend of Portland Cement to BS EN 197, a number of grades of selected silica sands to BS EN 13139 and additives to provide water resistance, thixotropic properties, workability and colour.

### Specification Outline

Pointing shall be carried out using Parex Standard Mortar as manufactured by Parex Ltd. The product must be stored, handled and used strictly in accordance with the manufacturer's instructions.

### Accreditations

Parex Limited has an integrated management system.

This is externally accredited to:

BS EN ISO 9001, BS EN ISO 14001, BS ISO 45001 & BES 6001.

### Typical Properties @ 20°C

#### Compressive Strength

1 Day	3 Days	7 Days	28 Days
20N/mm <sup>2</sup>	27N/mm <sup>2</sup>	35N/mm <sup>2</sup>	50N/mm <sup>2</sup>

Initial Set	2 1/2 hours
Pot Life	45 mins
Flexural Strength	7.0N/mm <sup>2</sup>
Adhesive Strength	> 1.5N/mm <sup>2</sup>
Density	2100Kg/m <sup>3</sup>



# STANDARD MORTAR (WALLING)

## TECHNICAL DATA

**PAREX**  
A SIKA COMPANY

### Instructions for Use

#### Preparation

In order to ensure adequate bonding of the new mortar to the masonry, it is important that the old mortar is removed, to a minimum depth of 1.5 times the joint width, and that any residual dust is removed from the joint.

If the masonry is porous, joints should be wetted down prior to repointing to prevent excessive suction.

#### Mixing

Place 4.5 litres of clean water in a mixing tub and gradually add dry Parex Standard Mortar whilst mixing (the quantity of water will vary with the colour used). Mix in a wide shallow pan using a low speed drill and Parex Standard Mortar Eproblender.

Mix until a consistency of stiff cream is achieved, adding a little extra water, if required. Allow mortar to stand for approx 5 minutes. Remix with the addition of a small amount of water, if necessary. Check correct consistency by filling the tube, the mortar should hang from the end of the nozzle when the tube is shaken.

#### Placing

Keeping the nozzle just clear of the wall, inject the mortar into the joint, slightly overfilling, working from the top of the wall downwards.

The mortar should be tooled off after it has formed a semi-dry surface skin and lost its initial sheen. The time this takes depends upon the absorbency of the masonry.

Parex Standard Mortar may be placed at temperatures between 5°C and 35°C. Do not carry out jointing work if rain is expected.



### Precautions

#### Health and Safety

Parex Standard Mortar is alkaline when mixed with water and should not come into contact with skin or eyes. Avoid inhalation of dust during mixing and wear safety glasses, dust mask and gloves. If skin contact occurs, wash thoroughly with clean water. Should eye contact occur, rinse immediately with plenty of clean water and seek medical advice. Full Health and Safety Data are given in a Product Safety Data Sheet.

#### Fire

Parex Standard Mortar is non-flammable.

#### Yield

Each 25kg bag of Parex Standard Mortar will yield approx. 14 litres of mixed material.

### Storage and Shelf Life

This product must be stored in unopened bags, kept clear of the ground in cool, dry conditions, protected from excess draught and frost. When kept under these conditions between temperatures of 5-45°C, the shelf life of the material will be 6 months from the date of manufacture.

### Packaging and Ordering

Parex Standard Mortar is supplied in 25kg valvesack bags.

#### Product Code

EA101 Natural	EA106 Yorkstone
EA102 Light Brown	EA108 White
EA103 Light Grey	EA110 Dark Brown
EA104 Dark Grey	EA111 Brick Red
EA105 Sandstone	EA115 Black

For further information and sales, please contact your local Parex office as listed below.

Parex Ltd products are guaranteed against defective materials and manufacture. Products are sold subject to the Parex Ltd Terms and Conditions of Sale, copies of which are forwarded on invoice and are available on request. Parex Ltd endeavours to ensure that the above data and any further advice is correct, however, it cannot accept any direct or indirect liability for the use of its products as such usage is beyond its control.



# STANDARD MORTAR COLOUR CHART



EA101 NATURAL



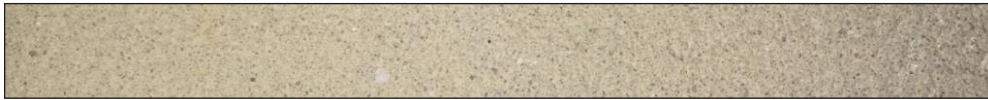
EA102 LIGHT BROWN



EA103 LIGHT GREY



EA104 DARK GREY



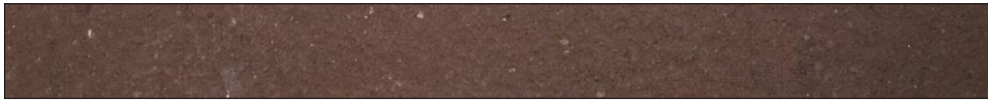
EA105 SANDSTONE



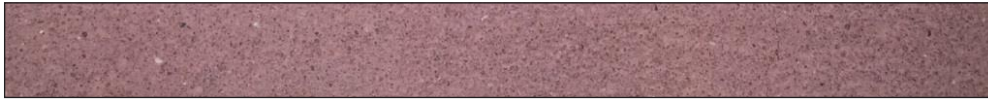
EA106 YORKSTONE



EA108 WHITE



EA110 DARK BROWN



EA111 BRICK RED



EA115 BLACK

**Disclaimer:**

We have made every effort to make the colours and finishes on this document as close as possible to the colours and finishes of the products you'll use. However, we cannot guarantee an exact match in colours and finishes and the images on this document should not be relied on as such. The representation of colours and textures are as such and may vary due to the printing process.