

Cementjoint

RIW Cementjoint is an advanced, elastomeric, highly tear resistant, breathable, waterproof composite tape.

BENEFITS

- Impermeable to water under 100m head of hydrostatic pressure
- Exhibits 600% elongation
- Adaptable, for use over construction and expansion joints
- Good UV and weather resistant
- Good chemical resistance

APPLICATIONS

- Construction / expansion joints
- Reinforcement of Cement Based coatings

APPLIED TO

- Concrete
- Masonry

DESCRIPTION

RIW Cementjoint is an advanced, elastomeric, highly tear resistant, breathable, waterproof composite tape.

TYPICAL USES

When embedded in the **RIW Cementseal** or **RIW Cementflex** materials, it gives a highly flexible, impermeable seal over 'live' cracks and expansion / construction joints.

DURABILITY

Subject to normal conditions of use, **RIW Cementjoint** will provide an effective barrier to the transmission of liquid water for the life of the structure.

SPECIFICATION

Please consult RIW Limited for further information.

CONSTRUCTION

GENERAL

All construction should conform to the Building Regulations, Codes of Practices and British Standards in current use at the time the building is being constructed. In particular it is recommended that reference is made to BS 8102 : 1990

PREPARATION

The areas to be treated must be free from all unsound material, i.e. dust, oil, grease, corrosion by-products and organic growth. Smooth surfaces should be roughened, all loose material and surface laitance removed and steel cleaned to bright metal preferably using wet grit or water blasting techniques or equivalent approved methods.

The strength of the concrete sub-base should be a minimum of 20 N / mm². Ensure all surfaces are fully saturated but free from standing water.

PRIMING

On horizontal substrates and floors, the area should be sealed using **RIW Cementseal Primer** applied by brush or roller.

PLACING

Apply 25mm wide masking tape centrally over the crack or joint before applying by brush a 1mm thick coat of **RIW Cementseal** or **RIW Cementflex** extending a minimum of 20mm beyond the edges of the reinforcing tape. Uniformly embed **RIW Cementjoint** using a trowel or similar ensuring there are no wrinkles, cutting at corners to provide an overlap. Apply a second 1mm coat as above to encapsulate the **RIW Cementjoint** as shown in the detail drawings.

When using **RIW Cementseal**, masking tape can be used to create an exposed joint by removing when the embedment coating is still wet. Over expansion joints allow slack in the tape, to allow for the designed degree of joint movement. A second tape can be installed where additional protection is required.

JOINING TAPES

After installation of the first section of tape as described above, immediately embed the second section, overlapping by a minimum of 100mm. Encapsulate as shown in the detail drawings.

ADVANTAGES

- Impermeable : Impermeable to water under 10 bar hydrostatic pressure (100m head of water) yet allows the free passage of water vapour.
- Flexible : Permanently elastomeric composite exhibiting over 600% elongation.
- Easy to use : **RIW Cementseal** and **RIW Cementflex** are used to install and joint the tape enabling rapid application.
- Resistant : Good UV and weathering resistance and highly resistant to a wide range of chemicals.

PERFORMANCE & COMPOSITION

RIW CEMENTJOINT	
Form	Elastomeric membrane embedded in backing fabric
Colour	White
Thickness	0.4mm
Elongation	600 % (ASTM D - 638)
Impermeability	Resists 10 bar pressure
Temperature range	- 20° C to + 90° C

The above performance figures are typical values and should not be considered a product specification.

SAFETY

Full health and safety instructions are contained on the product material safety data sheets and these must be referred to before use.

SUPPLY

AVAILABILITY

All RIW products can be obtained through Builders Merchants or approved stockists. A list of approved stockists is available from RIW Ltd's offices.

PACKAGING

120mm wide x 10m long rolls in box

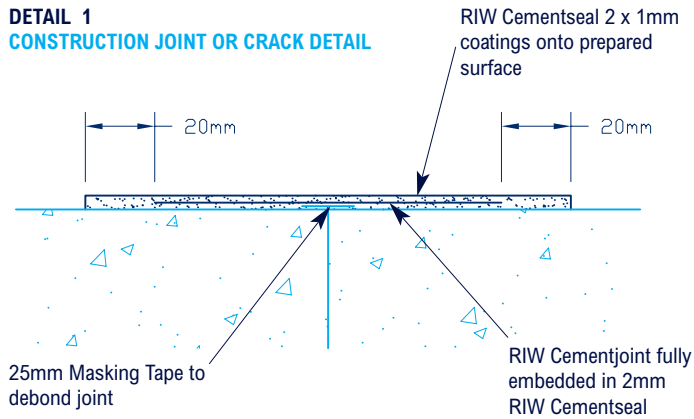
SHELF LIFE

Store in dry conditions.

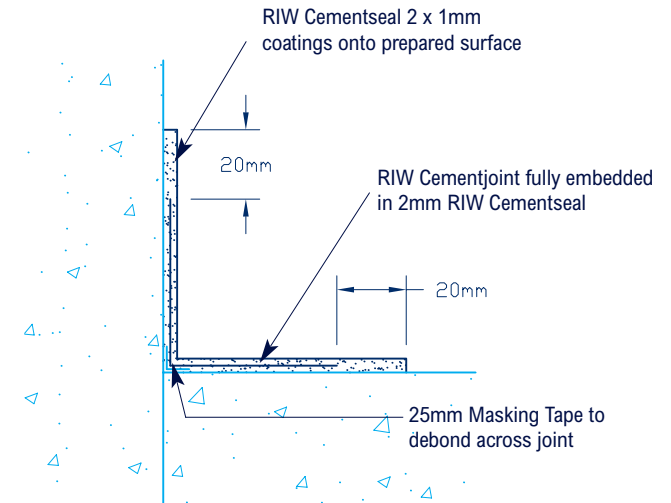
TECHNICAL SERVICES

The RIW Technical Department is available to advise on individual projects and top prepare and assist in the preparation and specifications and drawings. A list of experienced applicators of RIW materials is available from RIW Ltd's offices.

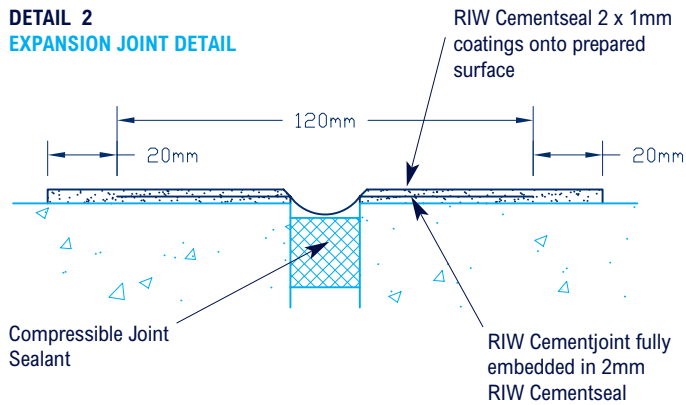
DETAIL 1
CONSTRUCTION JOINT OR CRACK DETAIL



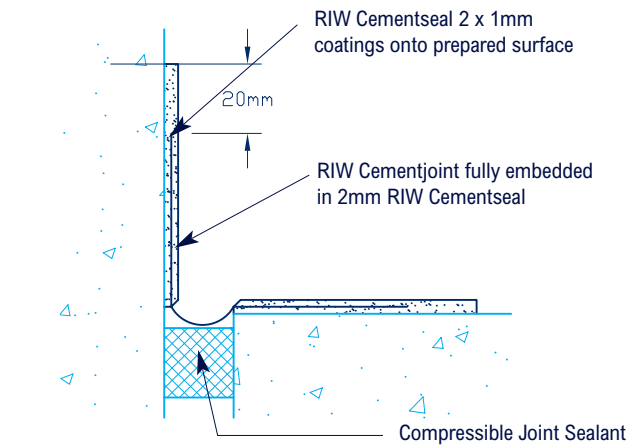
DETAIL 5
TYPICAL WALL/FLOOR ANGLE



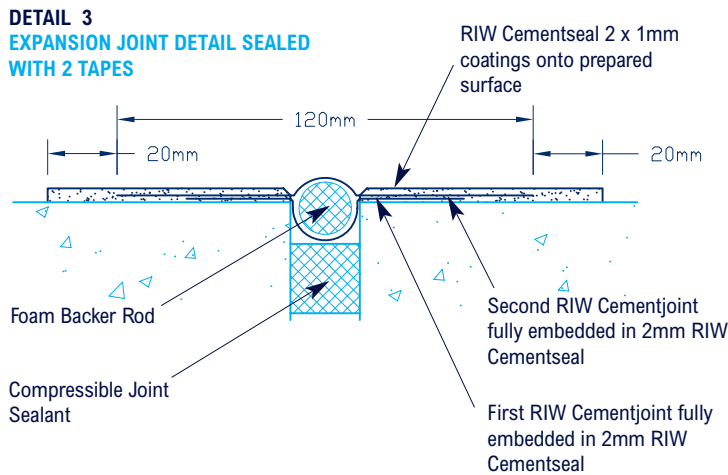
DETAIL 2
EXPANSION JOINT DETAIL



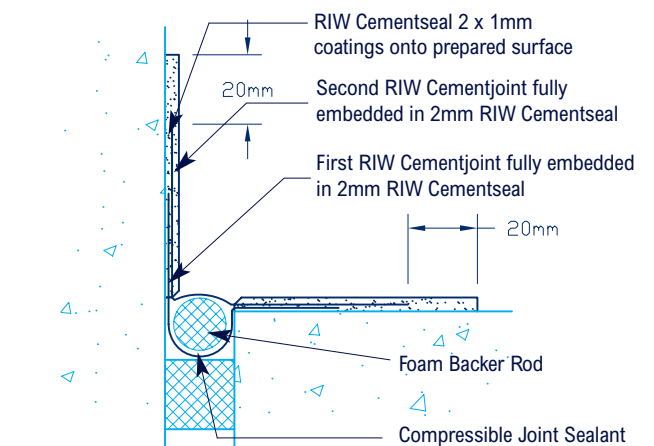
DETAIL 6
TYPICAL WALL/FLOOR ANGLE



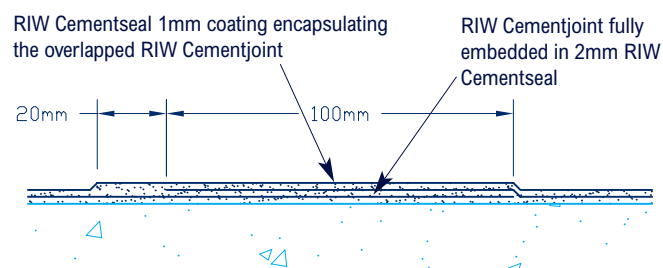
DETAIL 3
EXPANSION JOINT DETAIL SEALED WITH 2 TAPES



DETAIL 7
EXPANSION JOINT DETAIL SEALED WITH 2 TAPES



DETAIL 4
OVERLAP DETAILS



The information in this literature was correct at the time of going to press. However, we are committed to continually improving our products and reserve the right to change product specifications.

For the latest information, please consult RIW Limited. Conditions of use are beyond our control, therefore we can not warrant the results to be obtained.



RIW Limited

Arc House, Terrace Road South, Binfield, Bracknell, Berkshire RG42 4PZ

Technical enquiries tel: **01344 397777**

Commercial enquiries tel: **01344 397788**

www.riw.co.uk

